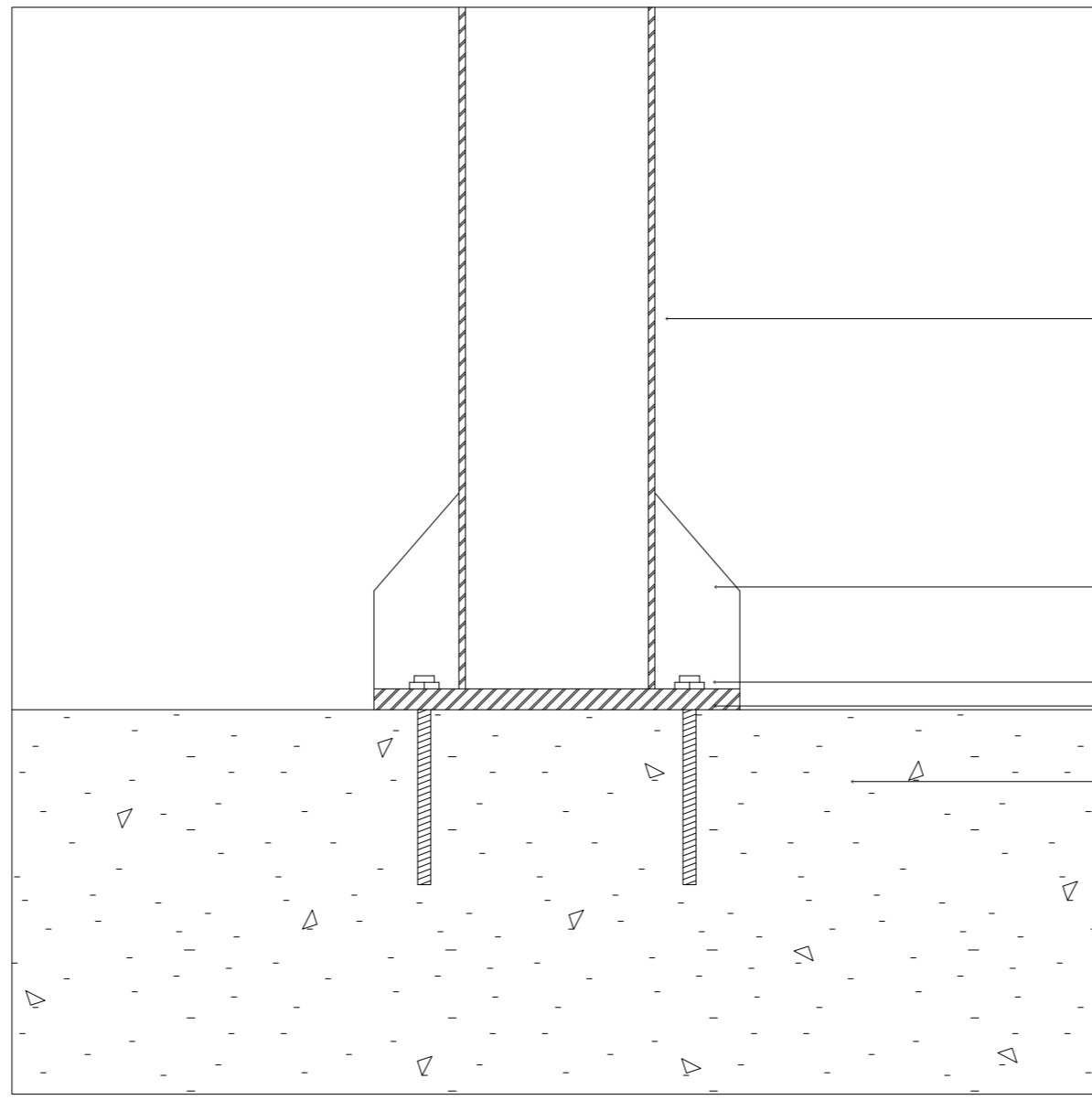


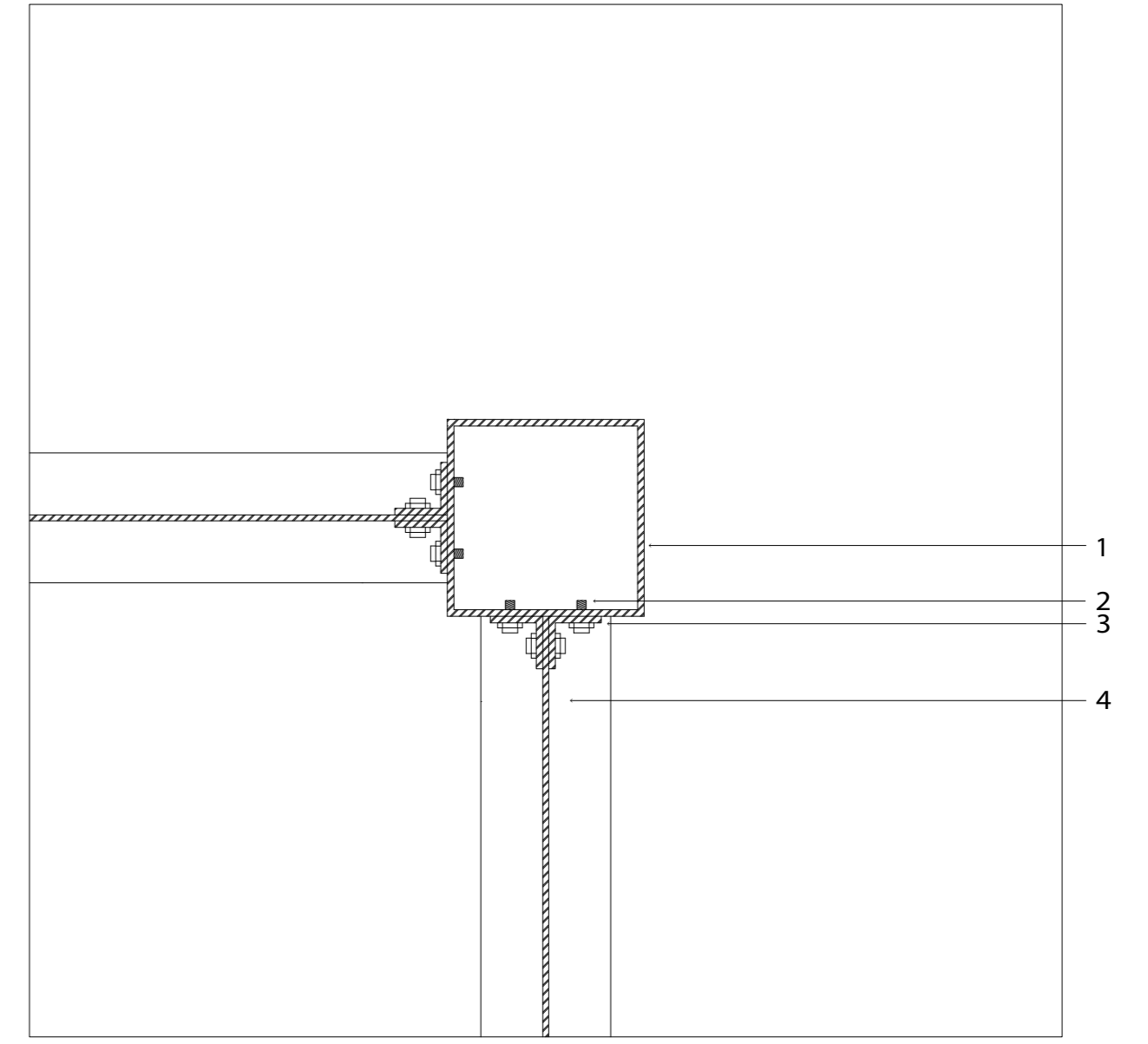
GUTTER / UNIVERSAL BEAM CONNECTION

- 1 10MM TRANSLUCENT POLYCARBONATE
- 2 ANTI SPLASH FLASHING
- 3 STEEL BOX GUTTER BRACKET
- 4 STEEL BOX GUTTER
- 5 BOX GUTTER SUPPORT SHEET
- 6 STEEL BOX GUTTER BRACKET
- 7 200 UB 18.2 UNIVERSAL STEEL BEAM AS3679/300



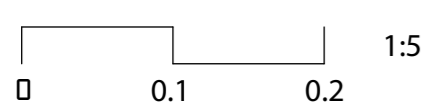
STEEL PLATE TO CONCRETE CONNECTION

- 1 150 SHS STEEL COLUMN
- 2 STEEL FLANGES
- 3 HAS-U 8.8 HDG ANCHOR ROD
- 4 16MM STEEL PLATE
- 5 CONCRETE SLAB

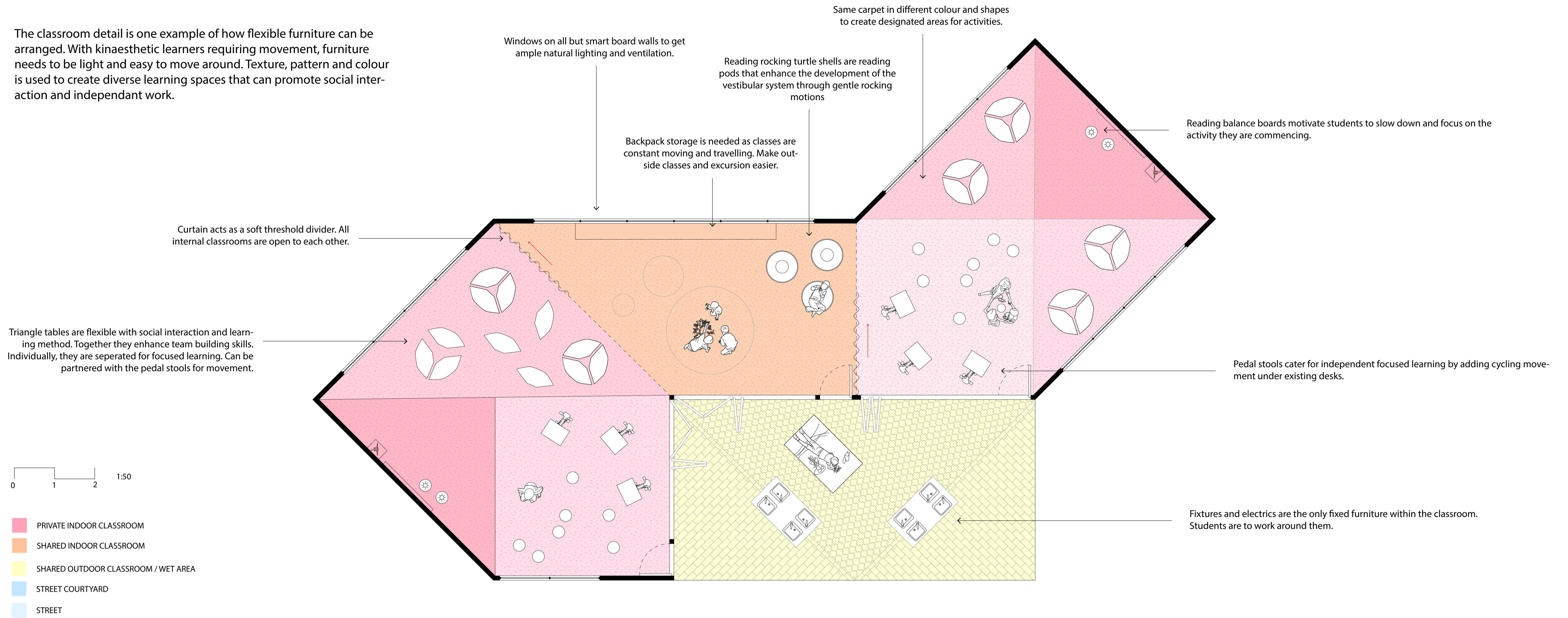


STEEL SHS COLUMN TO UNIVERSAL BEAM CONNECTION

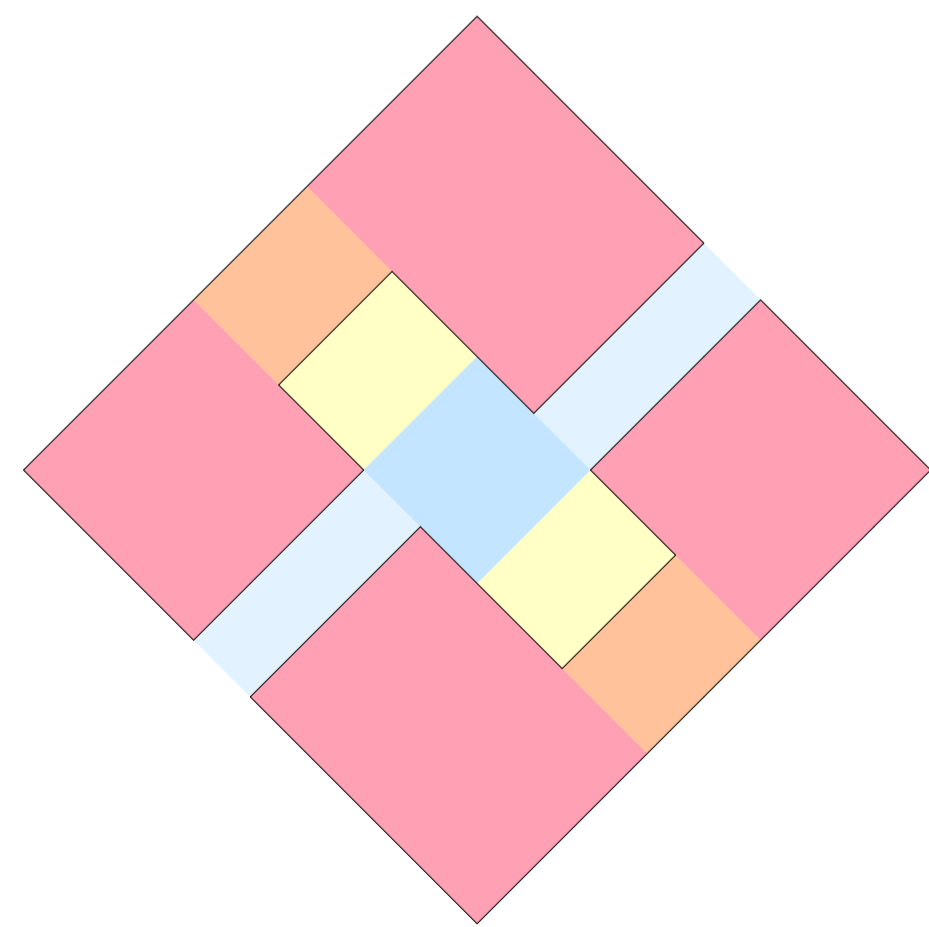
- 1 150 SHS STEEL COLUMN
- 2 ASTM A325 BOLT
- 3 STEEL SQUARE GROOVE JOINT
- 4 200 UB 18.2 UNIVERSAL STEEL BEAM AS3679/300



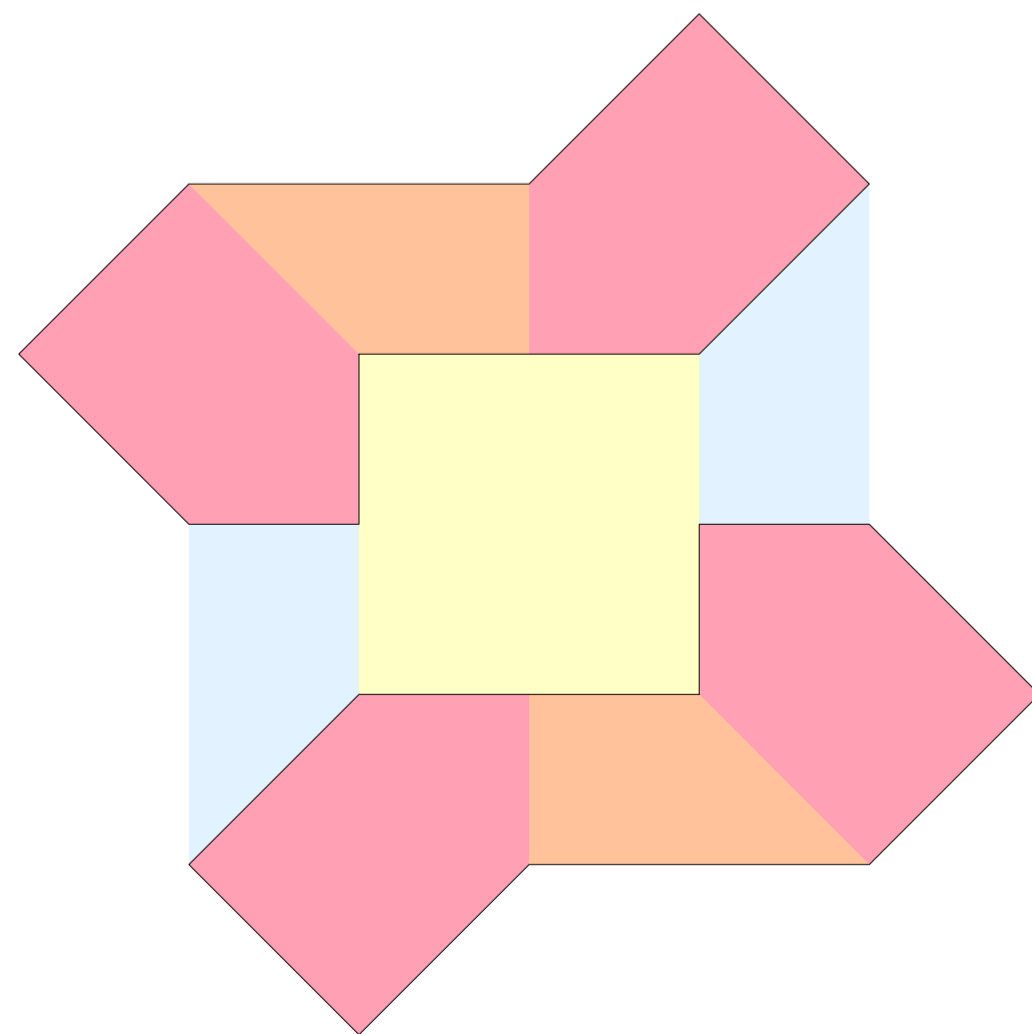
The classroom detail is one example of how flexible furniture can be arranged. With kinaesthetic learners requiring movement, furniture needs to be light and easy to move around. Texture, pattern and colour is used to create diverse learning spaces that can promote social interaction and independent work.



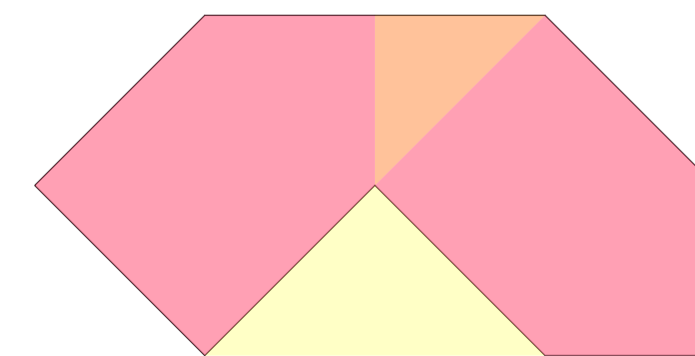
CLUSTER 1



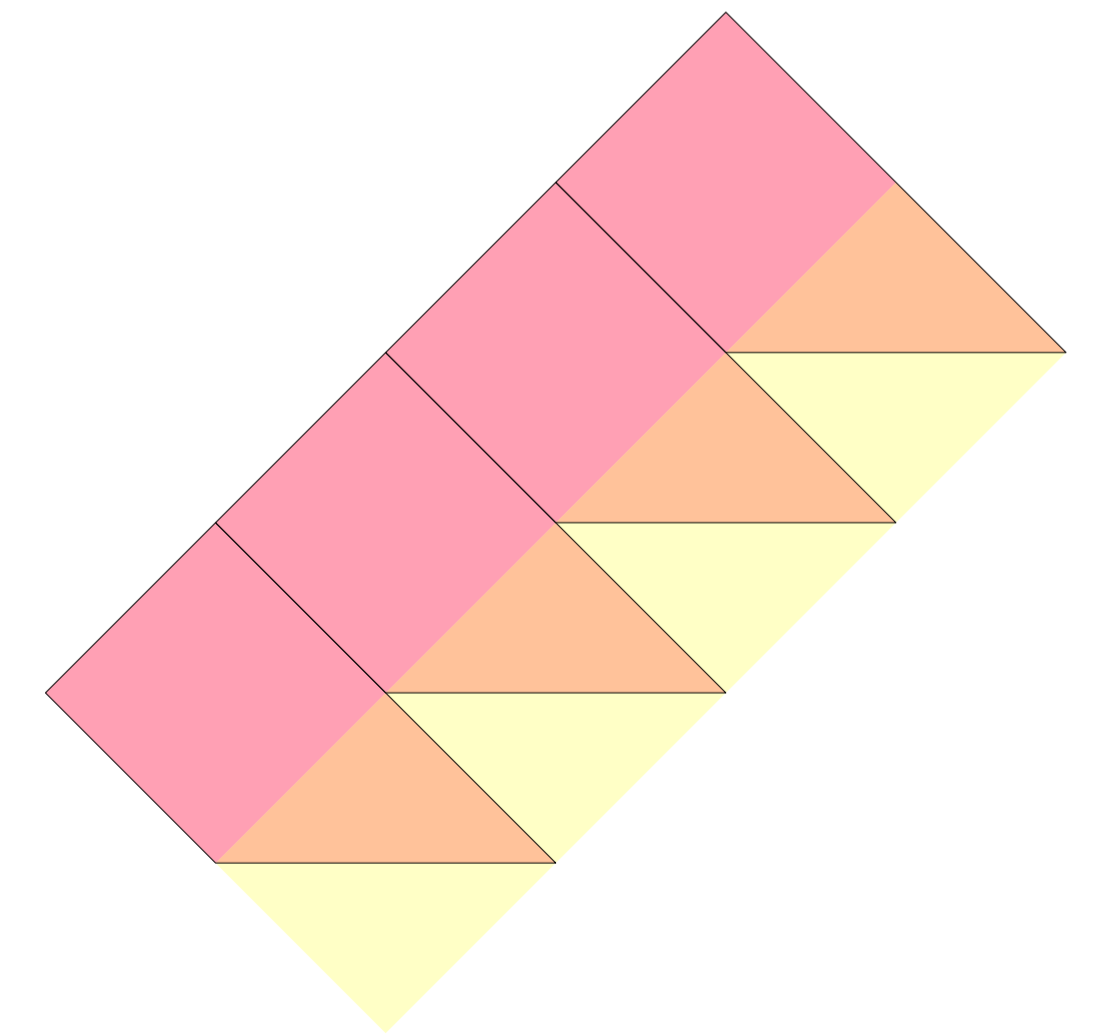
CLUSTER 2



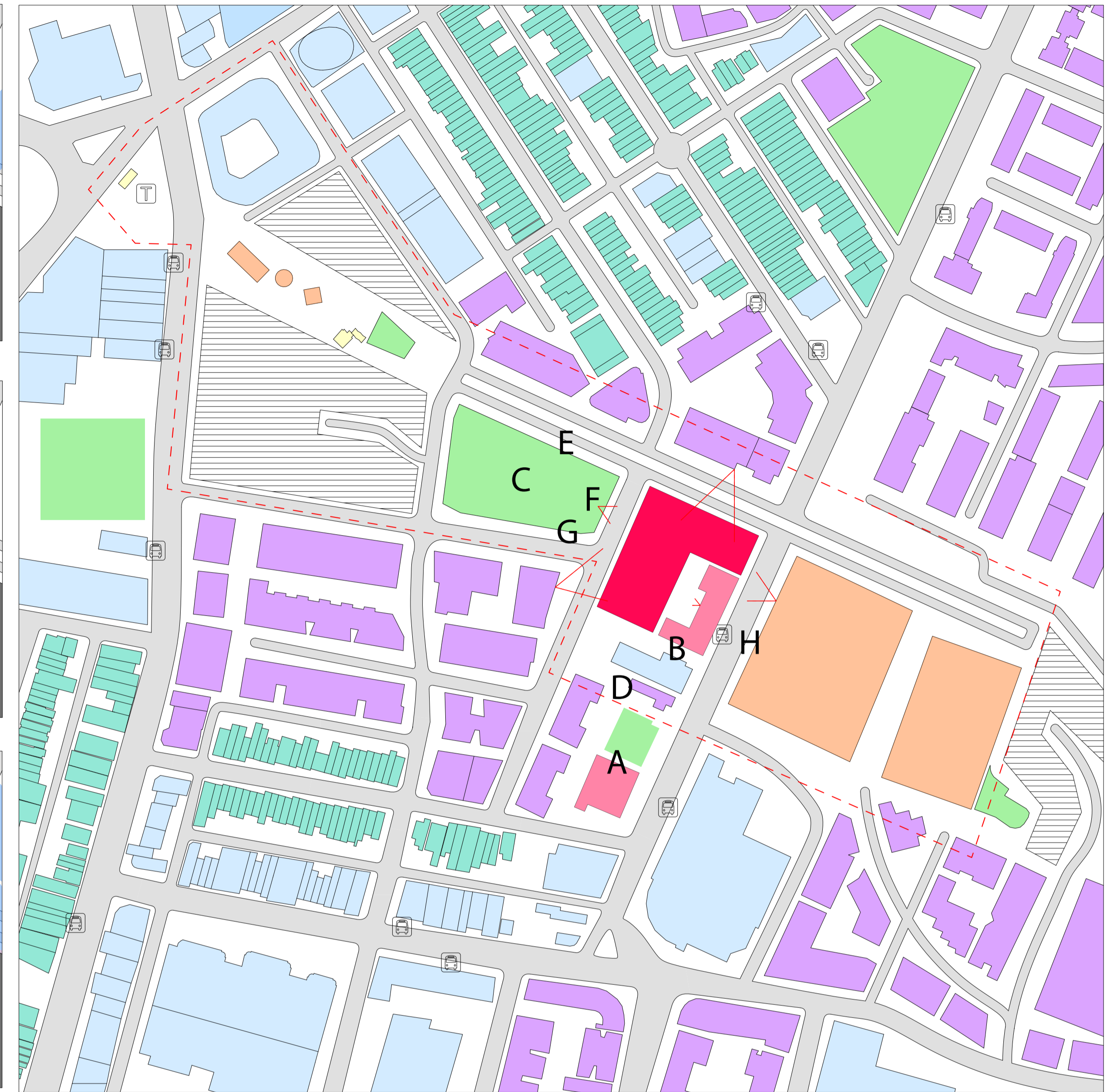
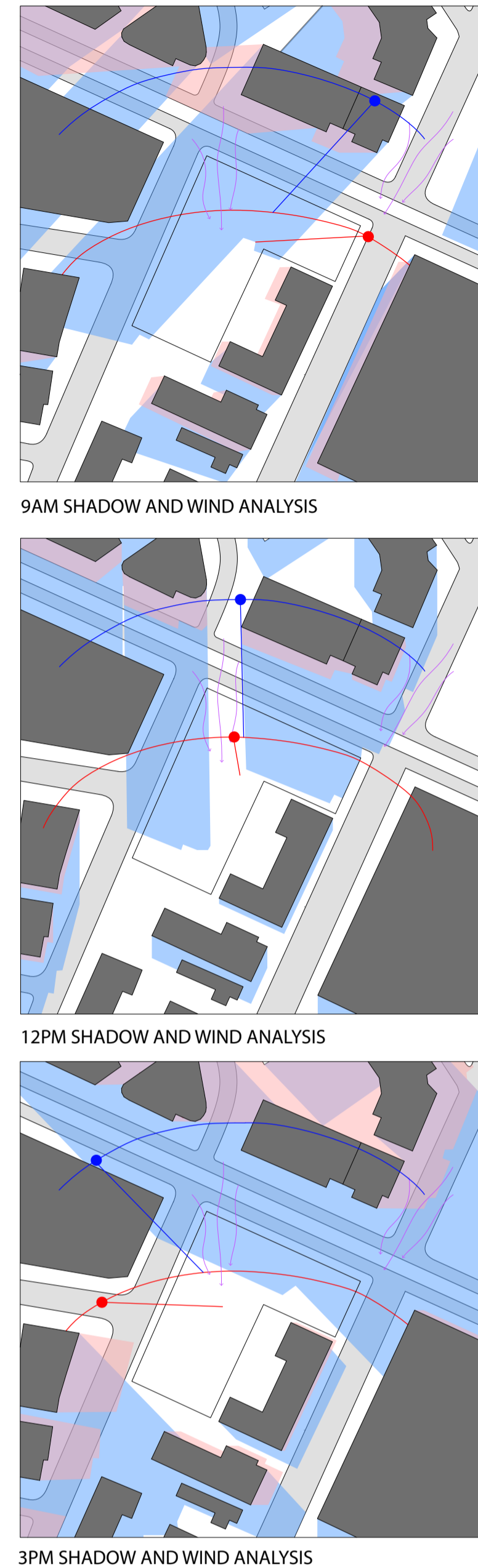
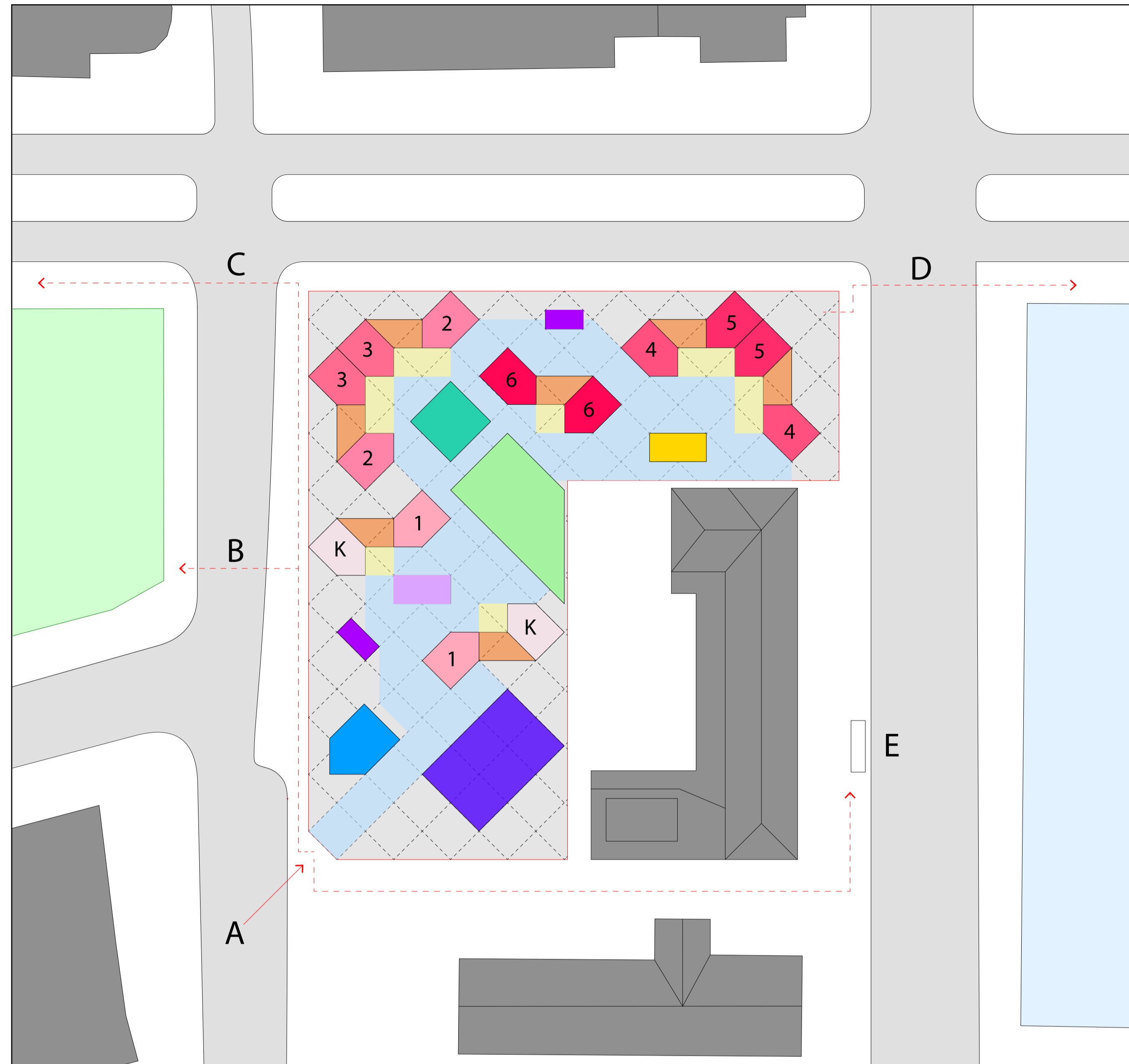
CLUSTER 3



CLUSTER 4

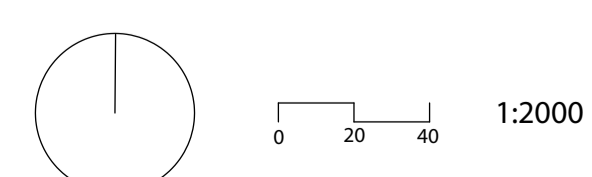
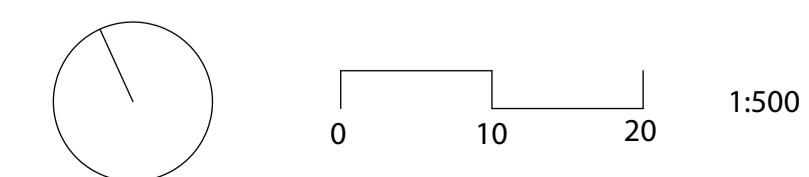


Scale: 1:200

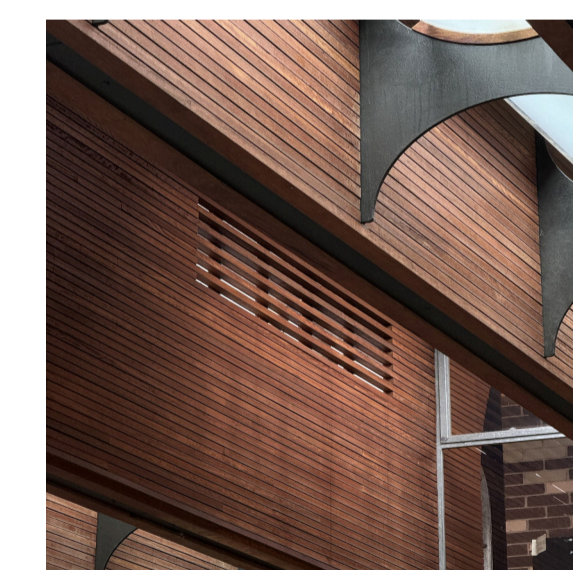


- SHARED OUTDOOR CLASSROOM / WET AREA
- SPECIALISED ARTS CLASSROOM
- SHARED INDOOR CLASSROOM
- OUTDOOR GRASS AREA
- KINDERGARTEN CLASSROOM
- COLA
- YEAR 1 CLASSROOM
- STREET
- YEAR 2 CLASSROOM
- RECEPTION
- YEAR 3 CLASSROOM
- PUBLIC ACCESS HALL
- YEAR 4 CLASSROOM
- CANTEN / KITCHEN CLASSROOM
- YEAR 5 CLASSROOM
- BATHROOMS
- YEAR 6 CLASSROOM

Being a kinaesthetic and visual learning primary school, the composition is shaped around movement, pattern and texture. The one story classrooms follow a rotated 6000 x 6000mm grid layout to promote movement and interaction. Movement is encouraged to stimulate students and to direct their attention to hands on learning. Space for interaction allows for improved social skills and less behavioural and attention issues. The need for movement with kinaesthetic learners provokes the need for diverse environmental classrooms. Different thresholds of indoor, outdoor, wet, shared and private, along with onsite and offsite learning areas, provide ample opportunities for students to collaborate and learn first hand from their environment. The school incorporates surrounding materials located within the Green Square area to create a built community and stimulate minds through natural materials.



- WINTER SHADE
- SUMMER SHADE
- TRANSPORT
- PUBLIC FACILITIES
- EDUCATION
- LOT
- PARK / GREEN AREA
- RESIDENTIAL TERRACE HOUSES
- COMMERCIAL BUILDINGS
- RESIDENTIAL APARTMENTS
- CIVIC HUB
- SITE LINES FROM NEIGHBOURING BUILDINGS



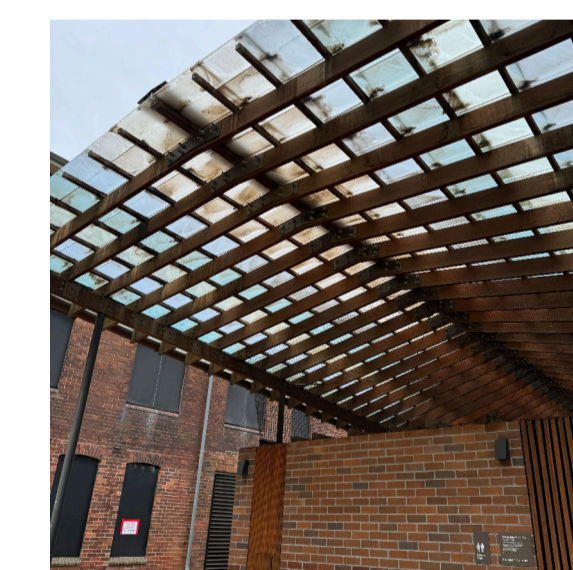
A BLACK BUTT TIMBER



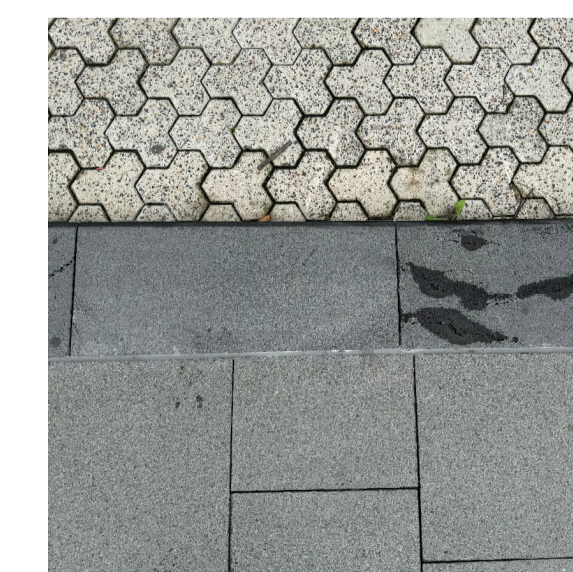
B PASTEL COLOURS ON EXISTING FACADE



C BREAKING THRESHOLD BETWEEN TILE AND GRASS



D BRICK, BLACK BUTT TIMBER AND POLYCARBONATE



E THRESHOLD TILE DIVIDE BETWEEN HEXAGONAL AND RECTANGULAR



F CONCRETE, TILE AND WATER



G PLAY ON THRESHOLDS WITH GRASS, ROCK, STONE AND CONCRETE



G TILE, PERFORATED STEEL AND DRIED NATIVE LEAF

GREEN SQUARE KINAESTHETIC SCHOOL MASTER PLAN AND SITE ANALYSIS